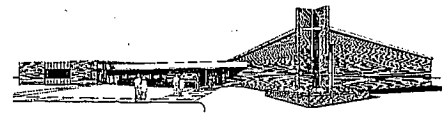


PRINCE OF PEACE LUTHERAN CHURCH

Rev. William A. Schaefer, Pastor



1325 Mission Road, Latrobe, PA 15650
Phone: 724-537-7273 Fax: 724-537-6039

Webpage: www.princeofpeacelatrobe.com
Email: office@princeofpeacelatrobe.com



P.O.P. NOTES



February 2011 Volume 49 Issue 2

Worship as a Way of Life

Peter Marty in the latest edition of *The Lutheran* magazine has a wonderful article on worshipping in this day and age. He talks about why Lutherans turn to worship, "the central melody for their lives because they want a place where God is taken seriously and where they can be taken seriously. For them, worship is their weekly opportunity to practice not being God."

Our world declares to us each day that we need to be in control, that the world knows more than God. Even worse, the world today pushes us harder and harder to say that there is no God other than that which we want to be our God. When we succumb to this temptation, we are nudged closer and closer to not coming to worship by saying, "What is the point? What can an hour on Sunday do for me that I can not get in daily life? I can find God in anything and in any place." We fall into the trap of staying away from the one place that helps us to see and know that God does love us and that we are His children through the life, death and resurrection of Jesus the Christ.

Marty helps to clear up that misconception in his article. He writes, "Faithful worshipers are those who get tired of living paltry lives in an awe-deficient world. They know that the activities we undertake in life in repeat fashion always possess the greatest potential to shape us in a long-term way." In other words, it is in worship that we find meaning where there is no meaning, inspiration where there is hopelessness and joy where there is struggle and strife. In worship, life in God becomes awe-inspiring and constructive in ways that we cannot fathom.

He continues, "So faithful people return time and time again to communally confess sin, eat gratefully from the communion table, and sing the spirited liturgies and songs of the church. They become our human response to a 'for us' God who keeps acting so graciously in our favor." In worship, we are making our response to God because of the many gifts that he has given to each of us. Look around yourself and see where God is active and giving. Look to see what God has give to you and how God has inspired and filled your life. When you recognize those things, then Sunday worship becomes more focused for you and the words, songs, prayers and love you experience here will take on a new meaning for you and you will hunger and crave to come back for more.

Marty's last paragraph says everything that we need to hear the most as a people of God. "If we stay away from worship too long, we start to make God into our own image. The privatization of our spiritual journey only transforms God to be virtually anything we want. Once back into the habit and flow of worship, however, and surrounded by a mix of people who don't mirror every facet of our life, something delightful happens. We discover God is quietly remaking us into God's own image. We encounter a rhythm stronger than our heartbeat. We find ourselves full of more joy than we can contain."

Once we are filled with that joy, we have no choice but to share it with those around us. We live the life that we are called to by Jesus and are filled with the power of the Holy Spirit. Our faith increases and we are forced into the world to be the hands and voice of Christ.

If you have been away from the worship of Prince of Peace, I invite you back to see and experience the transforming power of Jesus Christ. Look into your life and see how Christ is inspiring you and blessing you and come to worship to give him thanks. Where there is Jesus, there is love and life. Come and see the power of Jesus Christ in your life.

Yours in Christ,

Pastor Bill

CHRISTIAN EDUCATION
Verna Allen – Ministry Chair

**Faith, Family, Fun Night – February 24th
 6:00**



**Monthly meeting will be on Saturday,
 February 5th at 11:15 a.m.**

Snow Tubing! We will be going Snow Tubing at Hidden Valley on **Saturday Feb. 5, 2011.** We will leave from the church around noon. There will be a sign up sheet on the bulletin board in the narthex. This activity is for kids of all ages. All members of the youth group will tube free. All others will pay \$16.00 or if we have more than 15 in our group we will pay \$14.00 a person. The bad weather date will be Saturday Feb. 12, 2011.

The youth group will be having a **yard sale the summer of 2011.** As you are doing your spring cleaning, please consider donating items to the yard sale. Items will not be able to be brought to the church until June 2011. We are asking that no clothes be donated. Thank you.

FINANCE

Dwight Sarson – Ministry Chair

TREASURER'S REPORT

December 2010

CURRENT FUND

Beginning Balance	\$2,269.48
Receipts	\$15,356.40
Disbursements	\$10,580.12
Ending Balance	\$7,045.76

BENEVOLENCE

2010 Pledge	\$18,000
Amount Pledged to Date	\$18,000
Amount Received to Date	\$13,127.75
Differnece Over/(Under)	(4,872.75)

BUILDING FUND

Beginning Balance	\$16,097.00
Receipts	\$ 1,414.21
Funds Available	\$17,511.21
Disbursements	\$
Ending Balance	\$17,511.21

OUTREACH

Vickie Onusko – Ministry Chair

Food Pantry – Just a head's up – our day to help at the food pantry is March 22nd.

Life Line Screening – As in the past, Prince of Peace will again host health screenings that could save your live. Prince of Peace is pleased to offer preventive health screenings in collaboration with life Line Screening. The screenings are offered on April 8th at Prince of Peace in the fellowship hall. The screenings will test for stroke risk, vascular disease, and bone density. Call 1-888-653-6441 or visit www.lifelinescreening.com for more information and to pre-register.

PROPERTY AND HOUSE

Bob Woller and Kenny Lloyd are in Florida. The church is still in need of someone to fill in on the Property/House committee while they are gone. Please see Pastor or Dwight if interested.



CATECHISM CORNER

From Luther's Small Catechism
The Seventh Commandment

You shall not steal.

What is this?

Answer: We are to fear and love God, so that we neither take our neighbors' money or property nor cheat them by using shoddy merchandise or crooked deals to obtain it for ourselves. But instead help them to improve and protect their property and income.

STEWARDSHIP

Susann Tschupp – Ministry Chair

Stewardship as a Partnership

As Christian stewards, we are responsible to use all that God entrusts to us for His purposes. We are to be active administrators and managers of what we have received as a trust. This understanding of stewardship is revealed in W. H. Greever's definition of stewardship. "Christian stewardship is the practice of Christian religion. It is neither a department of life nor a sphere of activity. It is the Christian conception of life as a whole, manifested in attitudes and actions."

In essence, we are in a partnership with the Lord as the stewards of His kingdom. In the Old Testament, this partnership could be referred to as the partnership between master and servant. However in the New Testament, this partnership gives way to the relationship between friends working together for the realization of a common purpose. Jesus told His disciples. *"I no longer call you servants, because a servant does not know his master's business. Instead, I have called you friends, for everything that I learned from My Father I have made known to you"* (John 15:15). The Apostle Paul adds to the status and dignity of our lives as stewards by calling us God's *"fellow workers"* (1 Corinthians 3:9). This partnership is furthermore the partnership of father and son. *"So you are no longer a slave, but a son; and since you a son, God has made you also an heir"* (Galatians 4:7). Christian stewardship is a family affair. God has elevated us so we don't merely work for Him as His agents and administrators of His property, but we work for him as His children sharing His purposes and His resources.

Through God's Word, we understand His purpose. *"And He made known to us His will according to His good pleasure, which He purposed in Christ, to be put into effect when the times will have reached their fulfillment—to bring all things in heaven and on earth together under one head, even Christ"* (Ephesians 1:9-10). What a joy and privilege God has given us to be in partnership with Him to help all people come to know Jesus as their Lord and Savior. As Jesus' junior partners, we understand that all we are and have are to be used in our stewardship partnership with Him.

MUSIC AND WORSHIP

Pam Yuhaniak – Ministry Chair

Flowers 2011 – the new pages are in the Book for Flowers for 2011. Hurry and get your special days.

Head Usher – sign up is in the Narthex on the Ushers stand – please consider committing to a month or two for the upcoming year.

WORSHIP ASSISTANTS FOR FEBRUARY

February 6th

Greeter: Don and Carol Kayser
Lay Reader: Lisa Mentch
Acolyte: Marc Weltz
Lay Assist.: Dennis Guyer/Cathie Schall
Counters:

February 13th

Greeters: Dan and Donna Gerhart
Lay Reader: Lisa Mentch
Acolyte: Nick Allen
Counters:

February 19th

Lay Reader:
Lay Assistants:

February 20th

Greeters: Lee Semasko
Lay Assistants: Ginger Warren/Pat Fry
Lay Reader: Lee Semasko
Acolyte: Courtney Warren
Counters:

February 27th

Greeters: Larry and Kelly Weltz
Lay Reader: Lee Semasko
Acolyte: Ben Douglas
Counters:

Head Usher for February: Glenn Thompson
Altar Care: Sheila Thompson

4:24?

Check the bottom of your calendar blocks for whom/what we are praying at 4:24p.m.

If you or someone you know from the congregation is in the hospital or is at home and sick and needs a visit from Pastor Bill, please call the office so that he can schedule a visit. The Pastor is only told by the hospital when a person is a patient if they ask for the church to be notified.

Prayer is an essential part of who we are as a people of God. Below is a list of people from our congregation to keep in your daily prayers. If you know of others who should be added to these lists, please contact the church office with the names.

From our congregation: Catherine Abrams, Julie Zeltner, Bev Guyer, Flo Gulisek, Ron Poole, Mary Jane Hayden, Whitey and Anne Koontz, Ayla Sarson, Vergean Helfferich, Jen Schaefer, Tim Dailey, Don Kayser, Vi McIlnay, and Dave Williams.

Others in need of our prayers: Rev. Susan Luttner, Taylor Ridilla, Dan Schaefer, Bill Hauger, Betty Onusko, Rick Warren, Shelly McAfoose, Nickolas Gehlman, Edith Head, Michael Santone, Rick Stouffer, Jill Blair, Mary Jane Bangor, Nash, Hannah Toth, and Cindy Holzer.

Our Shut-in members: Louise Johns (Green Meadows), Frieda Nehls (Barnes House), Helen Albright (at home), Phyllis Stewart (Redstone Highlands), Marie Hill (at home), Betty Felbaum (at home) Barney and Dolores Helfferich (Green Meadows), Thomas Washnock (at home) and Violet Myers (Barnes House).

Those in the Military: Capt. Michelle Davis, Sean Stewart, Mark Mickinak, Justin Kowatch, Scott Gillespie, Erik Sarson, and the 28th Military Police Battalion.

Justin Kowatch is stationed on a ship. Here is his address if you would like to send a card or something:

ENS. Justin Edward Kowatch
 USS O'Kane (DDG77)
 CF Division
 FPO AP, 96674-1295

OFFERING

01/23/11	GENERAL FUND	BENEVOLENCE
	AVG. NEEDED PER WEEK	PLEGDED PER WEEK
	\$2423	\$298
Offering	\$1292	\$114.50
Over/(under)	\$(1131)	\$(183.50)
Year to Date	(\$2,441)	\$(487)

Announcements

HELP FOR HOME HEATING BILLS The Low Income Home Energy Assistance Program is open at the County Assistance Office. To see if you or someone you know may qualify, there are program brochures and applications in the Narthex.

W.E.L.C.A. – All women of Prince of Peace are invited to a W.E.L.C.A. reorganization meeting at Sharky's on February 12th at 12:30p.m. Come join us for lunch and a discussion about how W.E.L.C.A. can contribute to our church and community and what direction it will take in the future.

Women of the ELCA Announcements

The Spring Cluster meeting will be held on Saturday April 9th at Salem Lutheran Church in Delmont. If you are interested in attending, please see Shirley Kelley by April 3rd. The meeting will be from 9:00am-1:00pm and lunch will be \$5.00.

Want to know more about what is happening with Women of the ELCA in the Southwestern PA Synod, and then attend the annual convention as a delegate. Each church is able to send one delegate to represent them at the convention. The convention is the evening of Friday May 13 and during the day on Saturday May 14 at the Bishop Connare Center in Greensburg, PA. If you would like to attend, even for one of the days, please let Shirley Kelley know by March 20, 2011

Each year the Women of the Southwestern PA Synod choose an organization to designate outreach funding and support to. If you know of an organization that you would like to see nominated to the Women of the Southwestern PA Synod for designated outreach, please see Jen Schaefer for the nomination forms. All nominations must be in by April 2, 2011.

Thrivent ChoiceSM keeps warming hearts and touching lives

Thrivent Choice, the charitable grant program from Thrivent Financial for Lutherans, continues to be a welcome funding source for Lutheran organizations nationwide.

If you are a member of Thrivent Financial, you likely are aware of this easy, convenient way to help support what matters most to you.

Through Thrivent Choice, members can help choose where Thrivent Financial distributes some of its charitable funds each year.

Eligible benefit members are designated Choice DollarsSM they can use to request funding for their choice among thousands of Lutheran organizations, including Prince of Peace Lutheran Church.

Members also help choose where Thrivent Financial distributes funds through the program's National Voting Events. **The next Thrivent Financial Choice Voting Event will be held Jan. 24 to Feb. 28 and features seven national nonprofit organizations in the area of health and human care.**

Thrivent Financial will distribute \$1 million among the participating charities, with the specific amounts based on the percentage of votes each organization receives. The organization included in this winter's Voting Event are:

Bethesda Lutheran Communities
Feeding America
Lutheran Immigration and Refugee Service
Lutheran Services in America
Orphan Grain Train
St. Jude Children's Research Hospital
Wheat Ridge Ministries

Thrivent Financial for Lutherans Benefit and Associate Members (16 yrs and older) can vote in one of three ways:

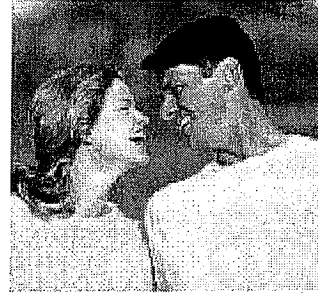
Online at Thrivent.com/choicevote (you must log in to Thrivent.com to vote online)
Returning the business reply card in the Winter issue of *Thrivent* magazine (mailed in mid-January 2011)
Calling 800-THRIVENT (800-847-4836) and say "Thrivent Choice". Follow voice prompts to select between:

Voting -- if participating in the national Voting Event among the seven designated charities -- or

Choice Dollars-- if directing individual Choice

Dollars to select organizations such, as the church.

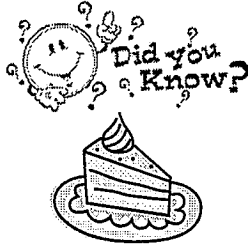
Remember, the Choice Voting Event will be open from Jan.24 to Feb. 28, while your individual 2010 Choice Dollars must be directed by March 31, 2011.



ATTENTION MARRIED COUPLES: Have you signed up for your spring Lutheran Marriage Encounter Weekend? Shake off those winter blahs and pump some new life into your marriage as you re-discover the romance in your relationship! Now is the time to register while there are still openings for the **March 25-27 Weekend at the Toftrees Resort and Conference Center, State College PA** (peaceful resort nestled within 1500 wooded acres) or the **Apr. 29-May 1 Weekend at the Mountain Laurel Resort, White Haven, PA** (in the beautiful Pocono Mountains just off Interstate 80 -- 2 hrs. north of Philadelphia). Weekends run from Friday night at 8 PM to Sunday at 5 PM and are designed to enrich ALL MARRIAGES. There is a \$45 per couple registration fee, plus toward the end of the weekend you will be given an opportunity to make a confidential contribution of whatever amount you wish toward continuation of the program. Two nights lodging, 5 meals for each of you, and all supplies are covered. If these dates don't fit your schedule, you may also sign up for one of the fall Weekends: Sept. 16-18 at the Olmsted Mansion & Retreat Center in Ludlow, PA or Nov. 4-6 at the Radisson Hotel Sharon, in West Middlesex, PA. To register for any of the Weekends, go to the website: www.GodLovesMarriage.org and sign up using your credit card, or for questions, or if you would like a brochure with registration form mailed to you, contact Pennsylvania Directors of Lutheran Marriage Encounter, Fred & Julie Schamber, at 724-325-3166 or email: fjschamber@comcast.net.

CONGREGATION AND COMMUNITY CARING...

This is a new feature in our Newsletter. This page will feature our members that are doing positive things within the congregation and in the community. If you catch someone being "good" please let Kellie know so they can be featured in this new section.



Thank you to the Banana Cake Baker, who shall remain nameless. It was delicious.

From Meals on Wheels:

Dear Sue,

Thank you very much for making the sandwich meals for the week of Jan. 10-14. We are very appreciative of you donating your time and the church's generosity in donating the supplies.

Thanks again for helping us to continue to serve our community.

From Grandview Elementary

Dear Prince of Peace Congregation,

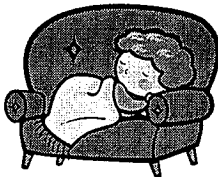
Thank you very much for your generosity in providing gifts to some of our needier children during the Christmas season. You have made their Christmas morning much happier and brighter with your kindness! What angels you are!! Know that the administration and staff at the Derry Area School district are thankful for your assistance in offering these families gifts for the children.

From one of the Mothers of the Children Helped


Thank you for thinking of me and my son. I really, really appreciate it. Sometimes, I need help and I don't know what to do and God sends me angels to help and you are one of them, Thank You

From one of the Children

Thank you for all the things I got (really cute card)



Prince of Peace and Laughlintown Christian Church collected a total of 34 blankets which were donated to Smith Oil! Many people will be a little warmer this winter because of your generosity.



A LOVE LETTER

In the New Testament, John writes a letter about God's love and the love we should show to other people.

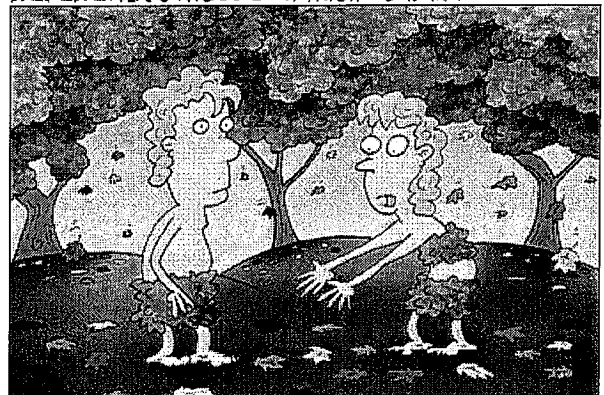
DIRECTIONS: Working from left to right, write down all the 1's in the word blanks. Continue with the 2's and finally the 3's. Then read about love, from 1 John 4:11-12, NIV.

lives 3	in 3	us 3	Since 1	and 3	God 1	so 1	loved 1	his 3
us 1	love 3	we 1	It 2	also 1	is 3	made 3	we 2	ought 1
to 1	love 2	love 1	one 1	complete 3	one 2	another 1	in 3	us 3
another 2	God 2							

1 JOHN 4:11-12, NIV

Answers: Since God so loved us, we also ought to love one another. If we love one another, God lives in us and his love is made complete in us.

REVERENDFUN.COM COPYRIGHT GCI, INC.



10-06-2006

WILL YOU PLEASE PICK UP ALL YOUR CLOTHES?

CONGREGATIONAL LEADERS

PASTOR - BILL SCHAEFER	Finance - Dwight Sarson (532-3020)
President - Dwight Sarson (532-3020)	Outreach - Vickie Onusko - (537-9383)
Vice President - Shirley Kelley (537-5645)	Fellowship - Shirley Kelley - (537-5645)
Secretary - Vickie Onusko (537-9383)	Worship/Music - Pam Yuhaniak (537-5533)
Financial Secretary - Pat Fry (539-7513)	Library - Margy Williams - (539-8704)
Treasurer - Verna Allen (532-2961)	W.E.L.C.A. - Shirley Kelley - (537-5645)
Stewardship - Susan Tschupp (219-3893)/ Andria Wood (532-1429)	Memorial Committee - Pastor Bill/Pat Fry
Christian Education - Verna Allen (532-2961)	Prayer Chain - Ginger Warren (593-7524)
Evangelism - Sarah Doris (539-7931)	Altar Care Coordinator- Pam Yuhaniak - (537-5533)
Property/House - Bob Woller (539-8042)	Funeral Dinner Coordinators- Sheila Thompson - (537-8010)/Ginger Warren (593-7524)



February Birthdays

- 5 Andrew Zidak
- 7 Sophia Amorose
Debbie Rose
Corey Stanko
Aimy Gruebel
Lucas Ray
Susan Sherbuck
- 8 Betty Tomci
Rachel Dahlmann
- 9 Vanessa Roddy
Michael Pavlak
Cameron Wells
Chris Massena
- 10 Dustyn McGinity
James Clegg
Dave Douglas
- 11 Patricia Williams
- 12 J.T. Douglas
- 13 Mark Ridge
Howard Sulzer
Shari Johnson
- 15 Dwight Koontz
Laurie Means
Angeline Schaefer
- 14 Nick Ross
- 17 Mike Ross
Daniel Downing
Lex Hamerski
- 18 Lauren Israel
Sarah Ridge
Chris Kowatch
Patricia Harr

- 19 Nathan Weaver
- 20 Don Warren
Pastor Bill Schaefer
- 21 Megan Smolleck
- 22 George Lindsey
- 26 Garrett Grimm
- 28 Nancy Matheny
Brooke Richards



February Baptisms

- 4 Myles Douglas
- 8 Pam Stanko
- 10 William Wood
- 21 Brian Zimmerman
Lara Zimmerman
- 26 Luke Jellison



February Anniversaries

- 11 Robert & Bonnie Hauser
William & Donna Smith

PIECES OF LOVE

Send special reminders of your love by creating messages that people can assemble and enjoy.

What you need:

- Large wooden craft sticks
- Tape
- Permanent markers
- Scissors
- Zippered sandwich baggies

What you do:

1. Make a rectangle out of seven craft sticks by placing them next to one another, long side against long side.
2. Tape the sticks together.
3. Turn the sticks over and draw a special picture or message. You can include this Bible verse: "We love because he first loved us" (1 John 4:19, NIV).
4. Cut through the tape to separate each craft stick.
5. Put all the sticks in a baggie.
6. Give your special messages to family members, friends or teachers -- along with directions for viewing them.